



CBHC

Colorado Behavioral Healthcare Council

*Working together to improve the health of Coloradans
through the delivery of high quality, community-based,
integrated behavioral and physical healthcare services*

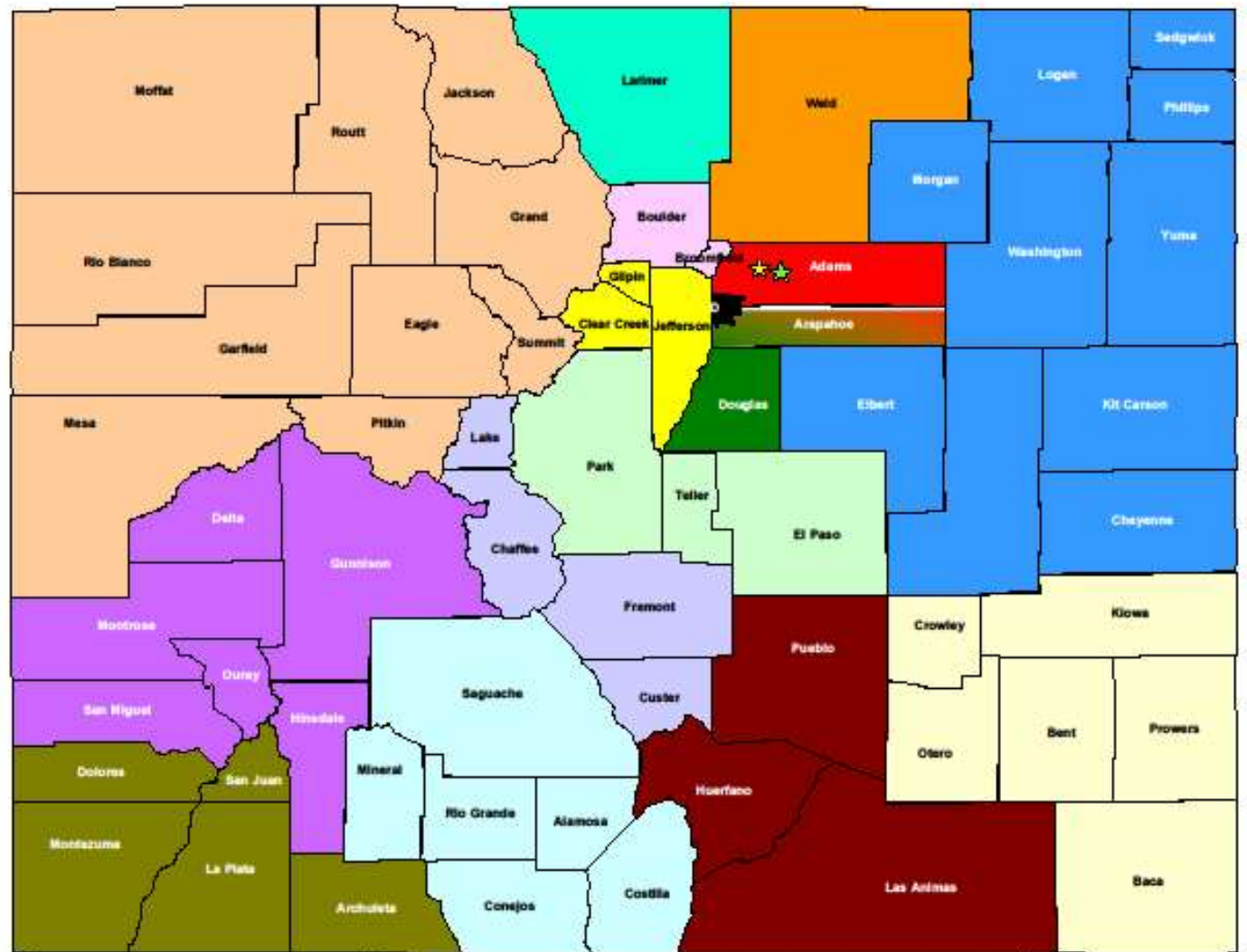


CBHC

Colorado Behavioral
Healthcare Council

About Us

- A nonprofit association formed in 1967 to advocate for community mental health
- We envision a state where all people have the opportunity for healthy and meaningful lives. Together, we strengthen communities with innovative care supporting the health, wellbeing and safety of all Coloradans.
- Our 28 member organizations represent a statewide network of integrated care providers and managers, including 17 Community Mental Health Centers, 5 Behavioral Health Organizations, 4 Managed Services Organizations, and 2 specialty health clinics.



- ★ Servicios de la Raza
- ★ Asian Pacific Development Center
- Annapoos/Douglas Mental Health Network*
- AspenPointe
- Aurora Mental Health Center*
- Axis Health Systems, Inc.
- Centennial Mental Health Center
- Community Reach Center
- Jefferson Center for Mental Health
- Mental Health Partners
- Mental Health Center of Denver
- The Center for Mental Health
- Mind Springs Health
- North Range Behavioral Health
- San Luis Valley Behavioral Health Group
- Solvista Health
- Southeast Health Group
- Health Solutions
- SummitStone Health Partners

*Annapoos County is served by Annapoos/Douglas MNH excluding the city of Aurora, which is served by Aurora MHC.

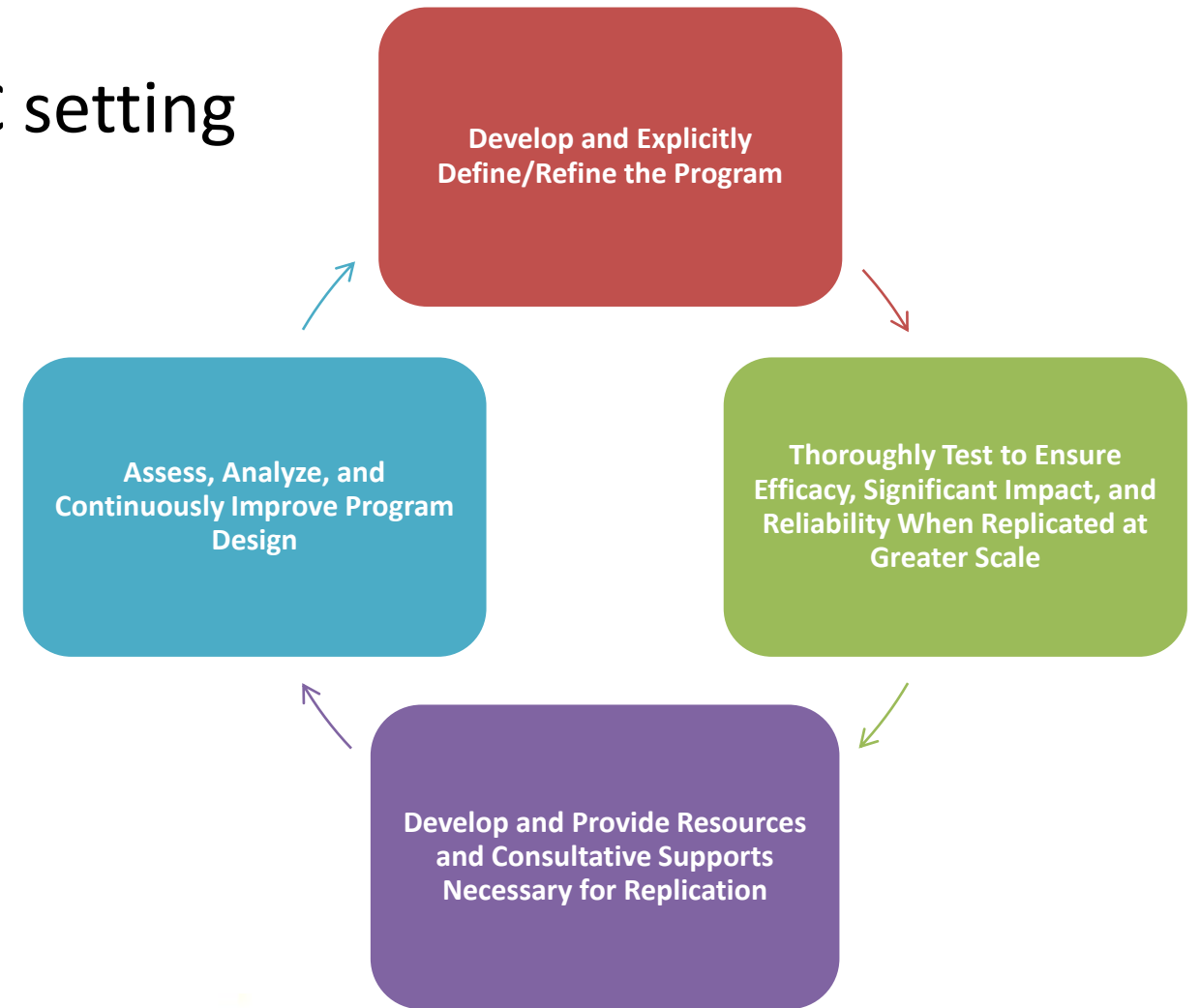
Colorado Community Mental Health Centers by County Served

Colorado's Community Mental Health Centers

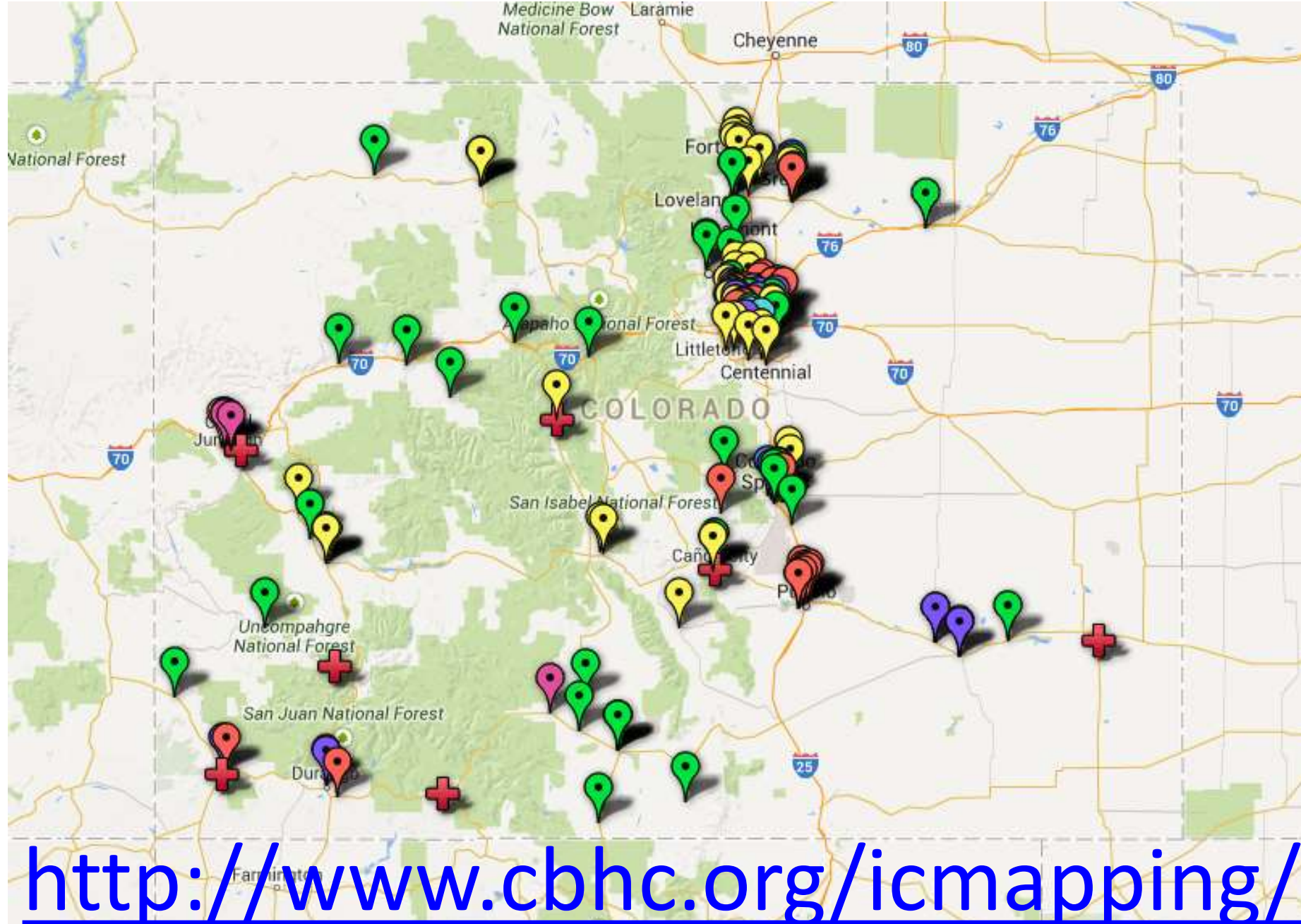
SIM Bi-Directional Pilot Program

Need for Integrated Health Homes in CMHC setting

- Serious mental illness (SMI)
- Substance Use Disorders (SUD)
- Chronic physical health conditions and mental illness



CBHC Integrated Care Mapping Project



<http://www.cbhc.org/icmapping/>

Behavioral Health and Businesses

- Leadership Pledge
- Resources
 - Understanding Risk Factors, Building Protective Factors
 - Statewide BH Crisis System
 - Suicide Prevention Training and Postvention Services
 - Mental Health First Aid
- EAP Programs
- Partnership – Mutual Ambassadors



AllHealth Network CEO Pledge

I, _____, CEO / President / GM / Executive Leader of _____ commit to fostering a culture of acceptance and awareness about behavioral health conditions in my company.

As part of my commitment, I will ensure that mental health is a strategic and visible priority for my company by:

- Ensure that my employees have access to information about available services in the community.
- Make certain my company has medical policies that address behavioral health concerns and provide options and encouragement to employees to seek them.
- Provide a statement on our company website stating our company's commitment to our employees and the community.
- Draft and communicate a statement to tell employees about this commitment;

As part of my commitment, my company will work with ALLHEALTH NETWORK to:

- Provide opportunities for presentations and trainings to educate my employees about mental health and suicide prevention.
- Improve mental health support for all employees to strengthen my workforce, their families, and the community.

_____ Signature

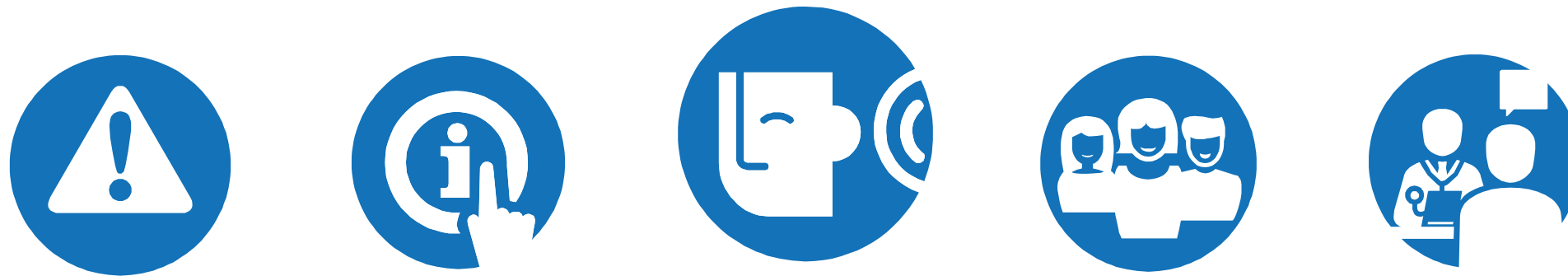
_____ Date



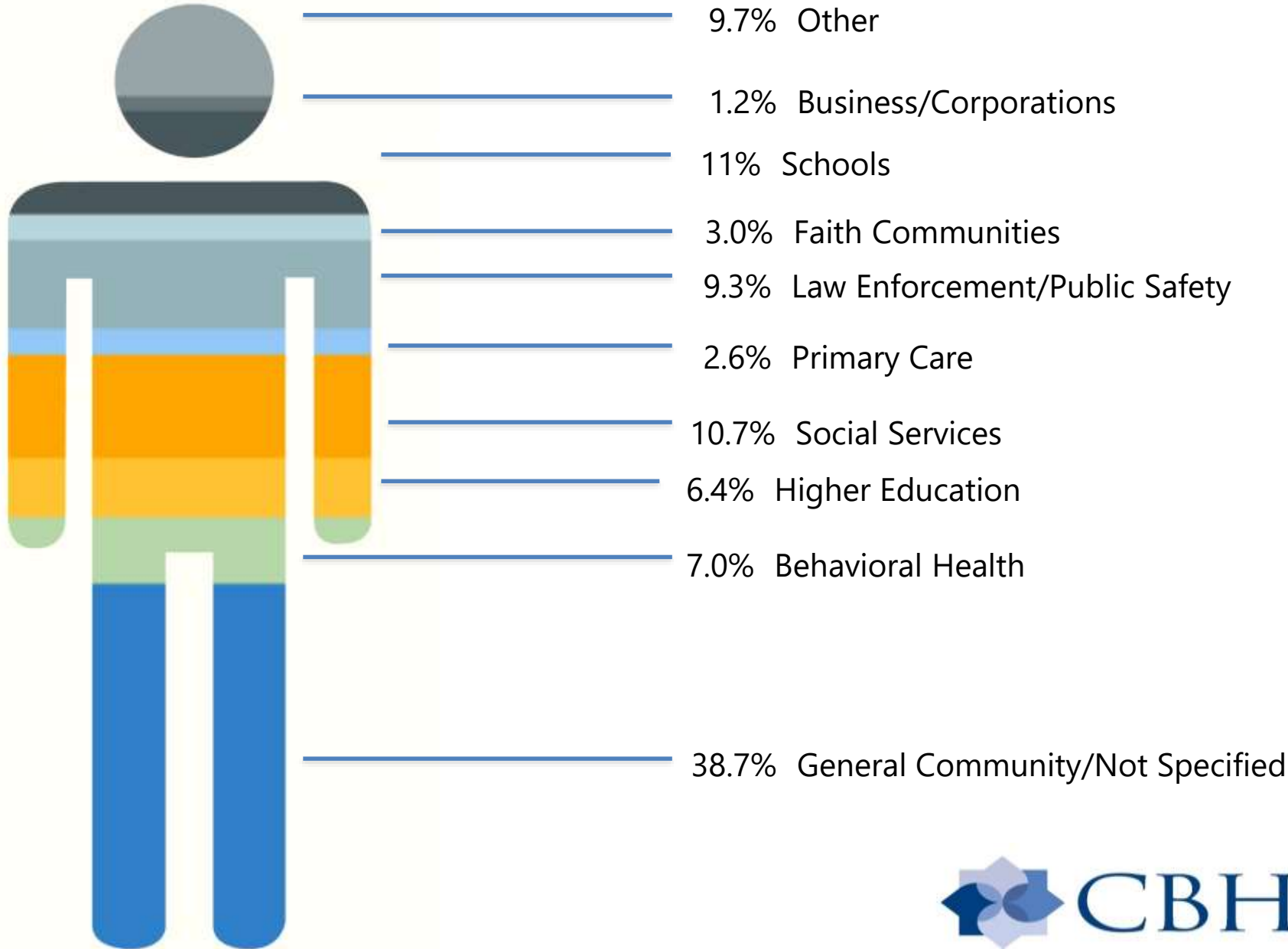
Mental Health First Aid



Mental Health First Aid is the initial help offered to a person developing a mental health or substance use problem, or experiencing a mental health crisis. The first aid is given until appropriate treatment and support are received or until the crisis resolves.



Who We're Reaching



Contact Us

Doyle Forrestal, JD

CEO

dforrestal@cbhc.org | 303-832-7594 x.201

Brian Turner, MPH

Deputy Director

bturner@cbhc.org | 303-832-7594 x.204

Frank Cornelia, MS, LPC

Director of Government & Community Relations

fcornelia@cbhc.org | 303-832-7594 x.203

Rachel Clements

MHFA Colorado Statewide Coordinator

rclements@mhfacolorado.org ; www.mhfacolorado.org



CBHC

Colorado Behavioral
Healthcare Council