

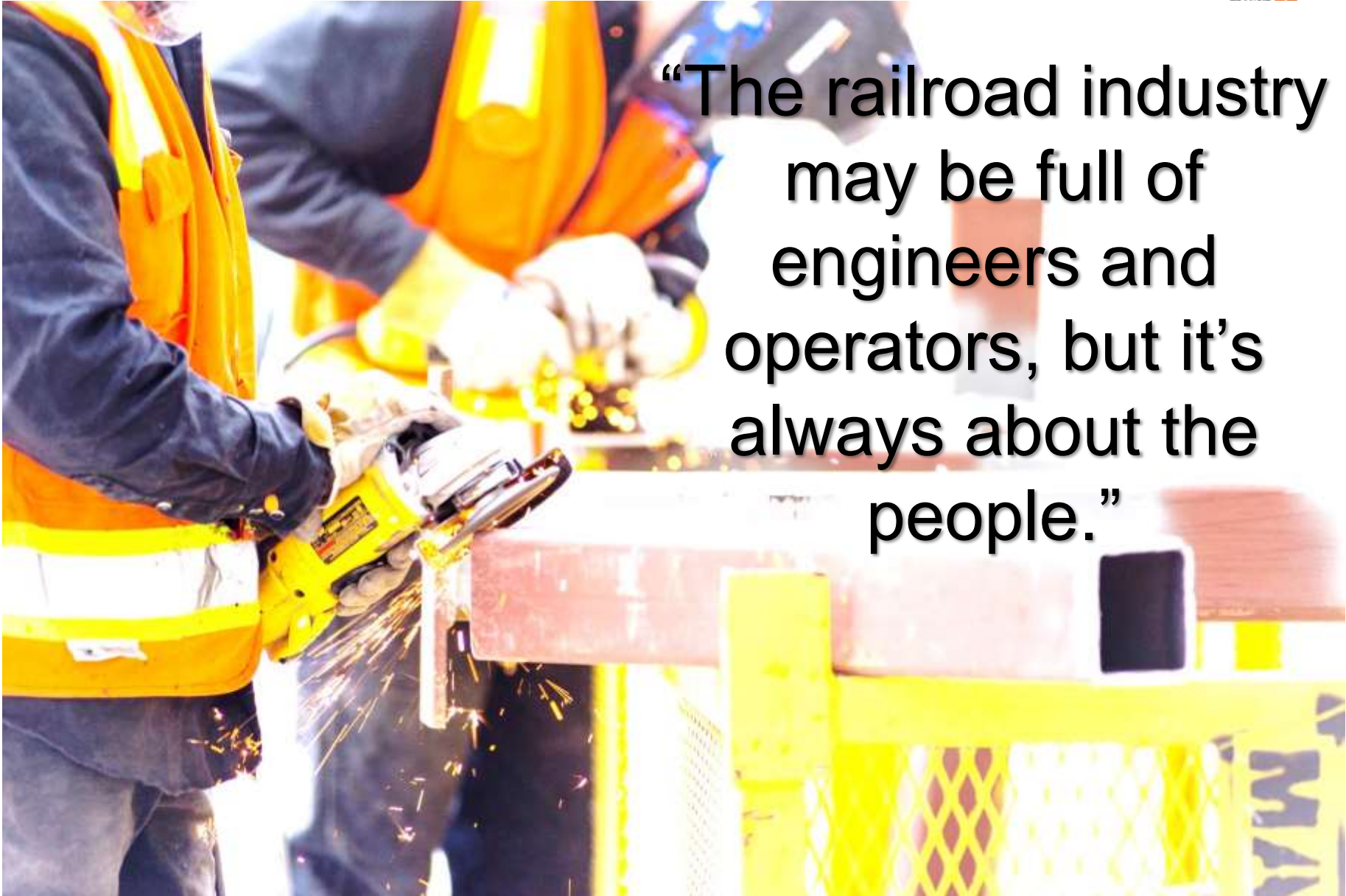
Eagle P3 Project – Stakeholder Update



*Denver Metro Chamber of Commerce Infrastructure
Committee– February 17, 2017*

What Is Eagle P3?





**“The railroad industry
may be full of
engineers and
operators, but it’s
always about the
people.”**

University of Colorado A Line



2016: Challenges Overshadow Successes

Positive train control (PTC)

Federal law requires major freight and commuter railroads to install new safety technology by the end of 2015. However, many railroads have been lobbying for more time because of the system's complexity and high cost. The system, known as positive train control, is designed to prevent accidents by slowing or stopping trains automatically when a collision or derailment is imminent.

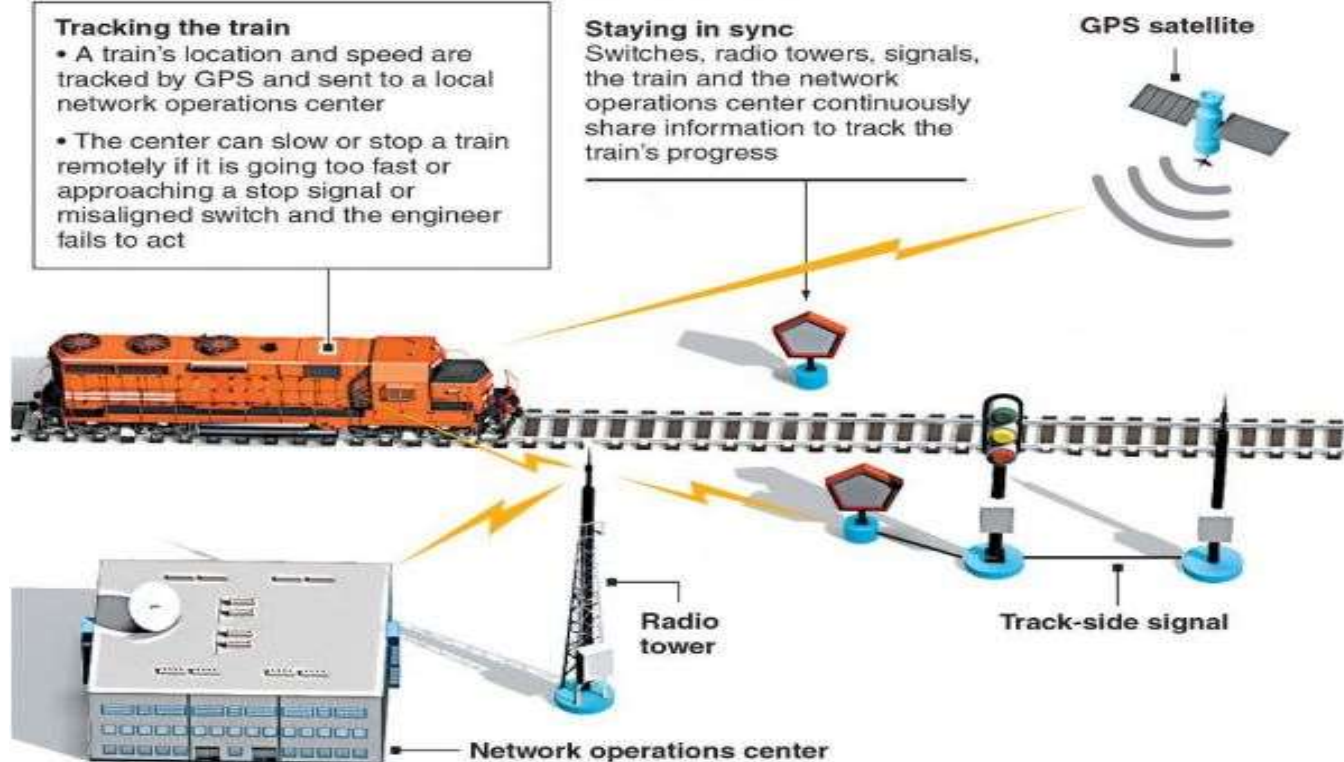
Slowing or stopping a train before an accident

Tracking the train

- A train's location and speed are tracked by GPS and sent to a local network operations center
- The center can slow or stop a train remotely if it is going too fast or approaching a stop signal or misaligned switch and the engineer fails to act

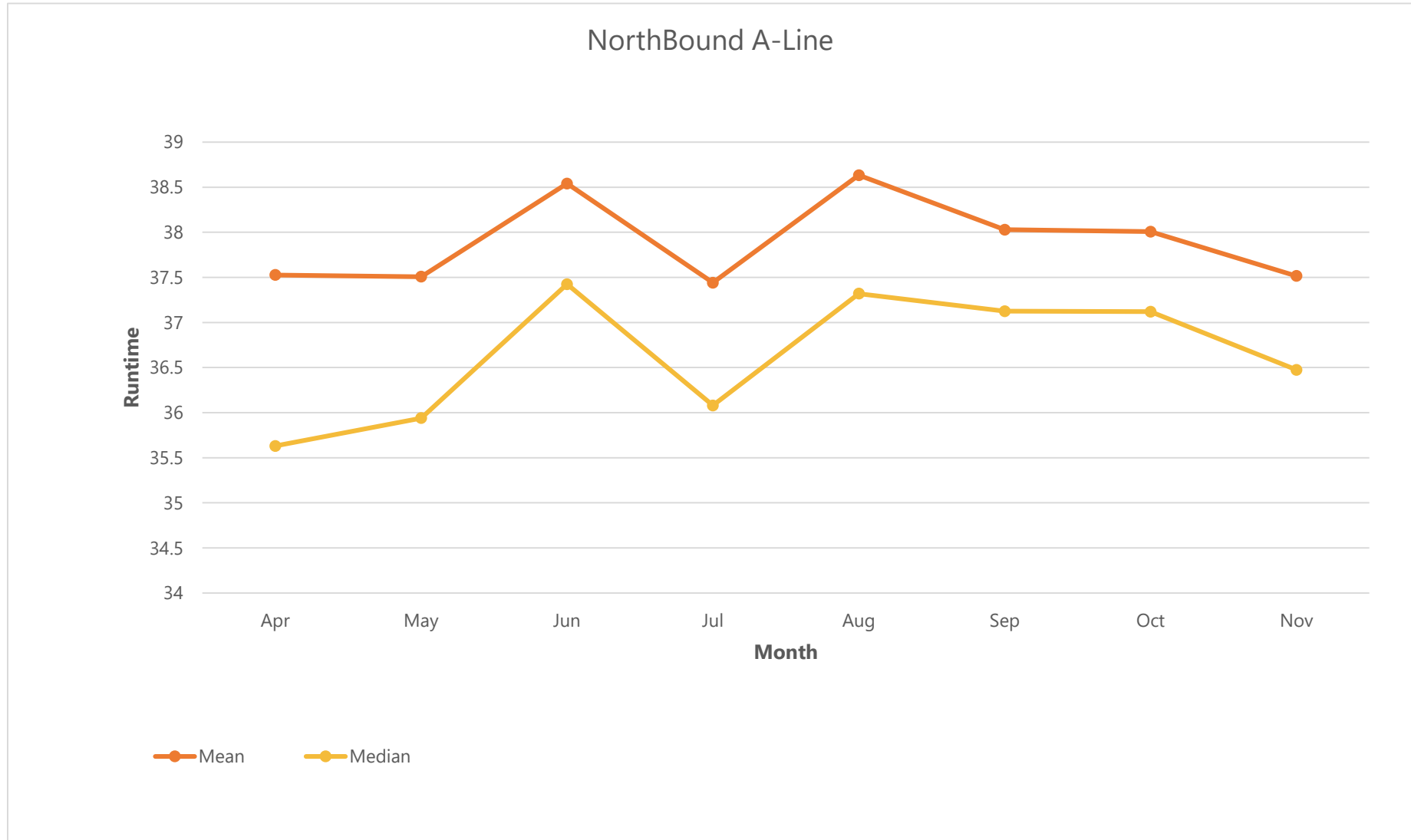
Staying in sync

Switches, radio towers, signals, the train and the network operations center continuously share information to track the train's progress

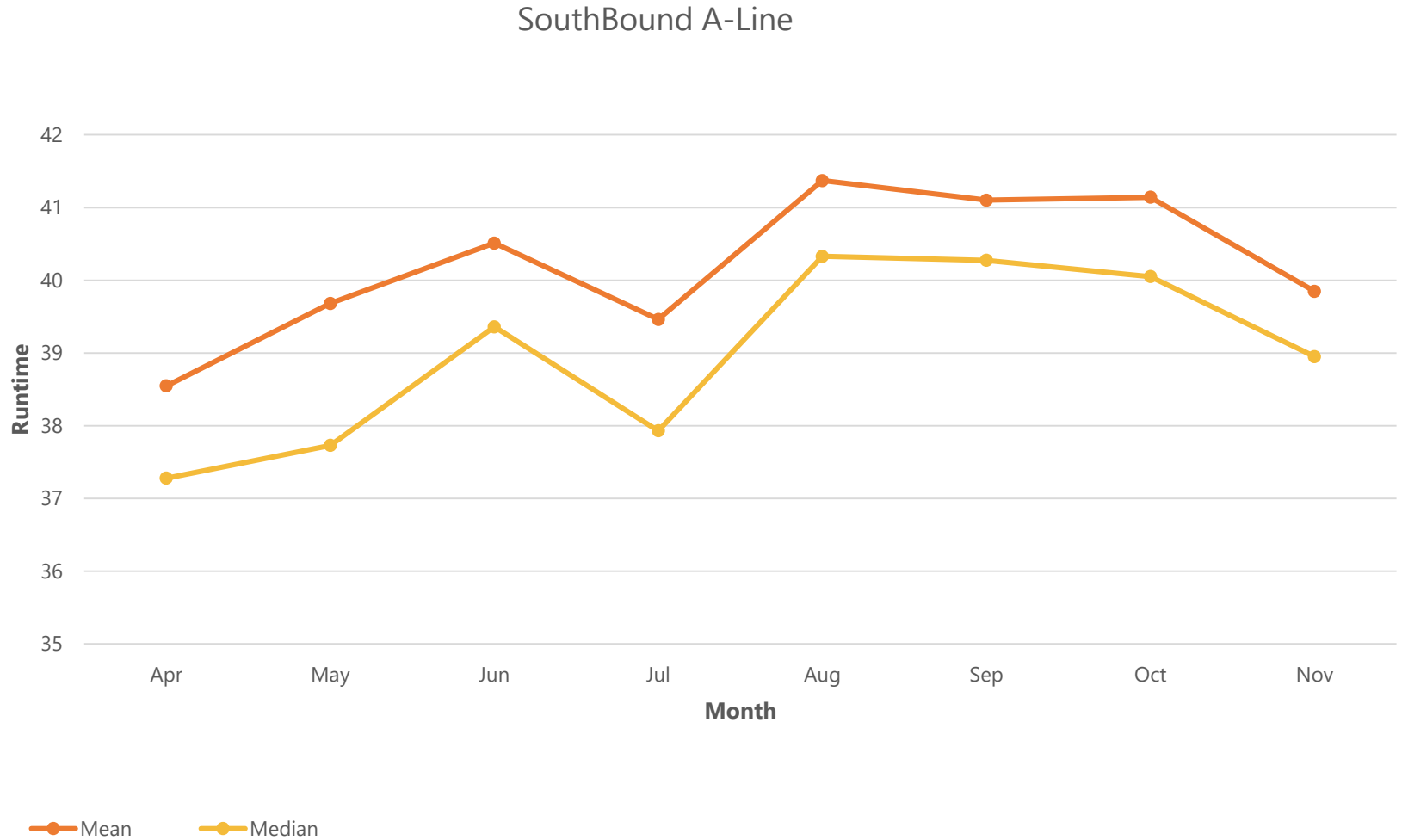


Source: Federal Railroad Administration, Congressional Research Service, Meteorcomm LLC
Graphic: Jemal R. Brinson, Ryan Haggerty, Chicago Tribune, TNS

A Line Run Time – NB (To Airport) Mean is 38.05 minutes



A Line Run Time – SB (From Airport) Mean is 40.55 minutes



On-Time Performance %



OTP		April	May	June	July	Aug	Sept	Oct	Nov	Dec	Yearly Avg
	Total	83.2	87.7	87.5	91.2	83.2	88.7	88.4	91.2	84.8	87.3
	A Line	83.2	87.6	87.3	90.5	81.4	87.5	87.3	90.0	83.2	86.5
	B Line	0.0	0.0	0.0	94.3	95.0	96.5	94.3	98.4	95.1	95.6

Economic Development



- At peak employment in April 2014, there were more than 1,400 people working on the project

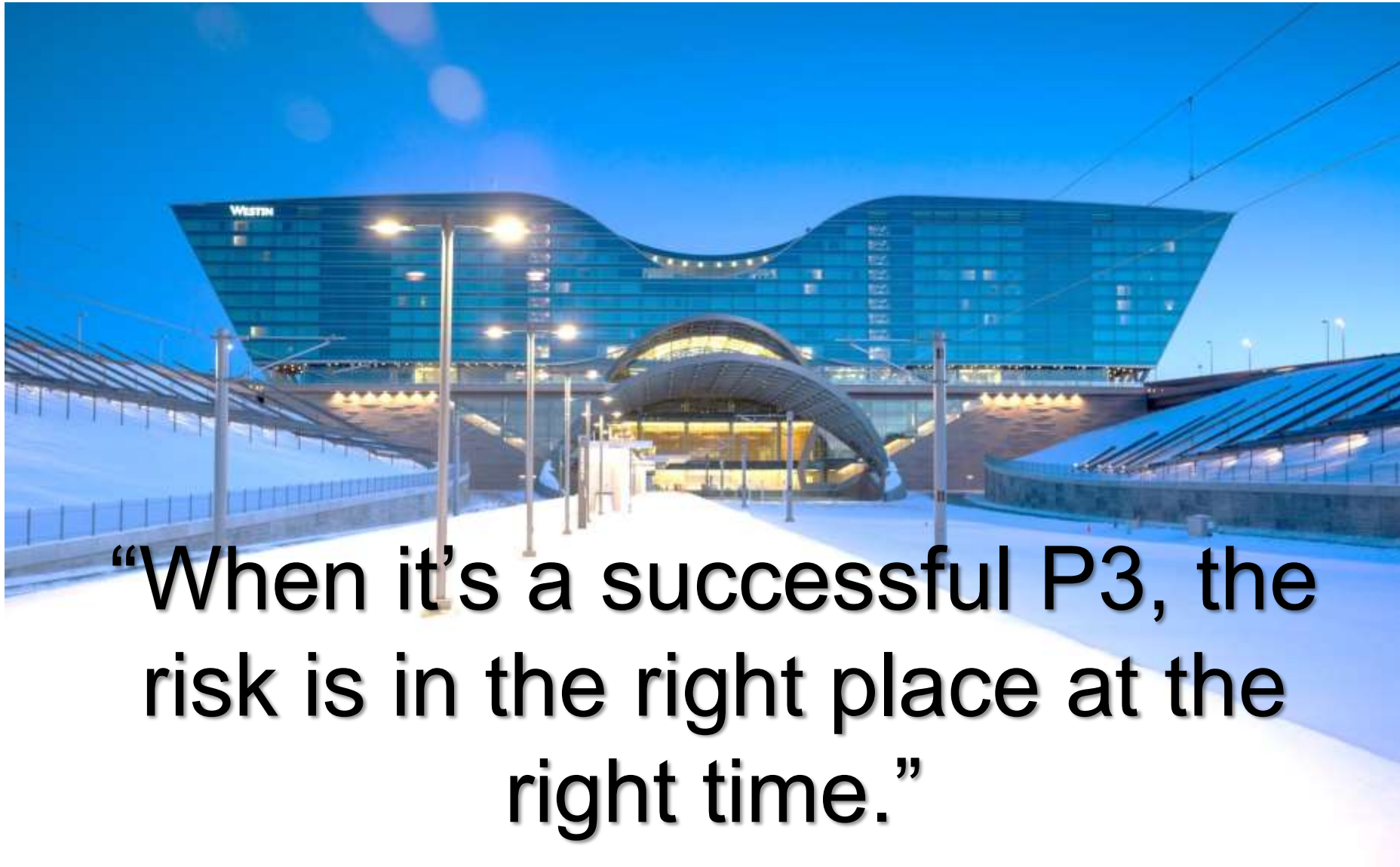
- As of March 2016, there were a total of 7,260 employees who were or are currently employed by the project

- More than \$908 M spent in the local economy including
 - Employee wages (\$187 M)
 - Equipment services and supplies (\$404 M)
 - Subcontractors (\$603M)

2017: Back On Track



The P3



Thank you for your
support.

Questions?